



## EV Fuse HCEVF

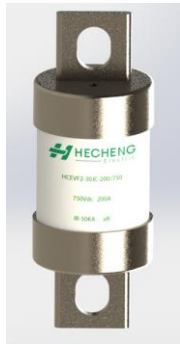
### Product Application

- Pure Electric, Hybrid Vehicle
- BDU, PDU, MSD
- Battery Module
- Charging Pile
- Ultra-capacitor
- Low Speed Electric Vehicle
- All In One Motor controller
- Auxiliary Equipment Junction Box
- Battery Charger

### Product Overview

Product Series	Product Series	Voltage Range	Current Range	Use Category	Breaking Capacity
HCEVF1	British BS88	175-750VDC	10-400A	gR aR	20kA 50kA
HCEVF2	Ceramic Pipe	250-1000VDC	100-500A	gR aR	20kA 50kA
HCEVF3	The North American Style	500-1000VDC	40-500A	gR aR	20kA 50kA
HCEVF4	European Standard Square Body	800VDC	100-400A	aR	50kA
HCEVF5	European Standard Square Body	500-1000VDC	200-630A	gR aR	20kA 50kA

**HCEVF2** **Ceramic Pipe**



**Features:**

This series of products are designed for the protection of high voltage DC system of electric vehicles, which can realize the full range of DC fault current protection. High strength alumina ceramic, high temperature resistance and good sealing. It has excellent cyclic shock resistance and vibration shock resistance.

**Basic Parameter:**

- Rated Voltage: 250-1000VDC
- Rated Current: 100-500A
- Breaking Capacity: 20kA (L/R ≤ 2ms)  
50kA (L/R ≤ 2ms)
- Standard: ISO8820, GB/T31465
- RoHS
- Use Category: gR or aR

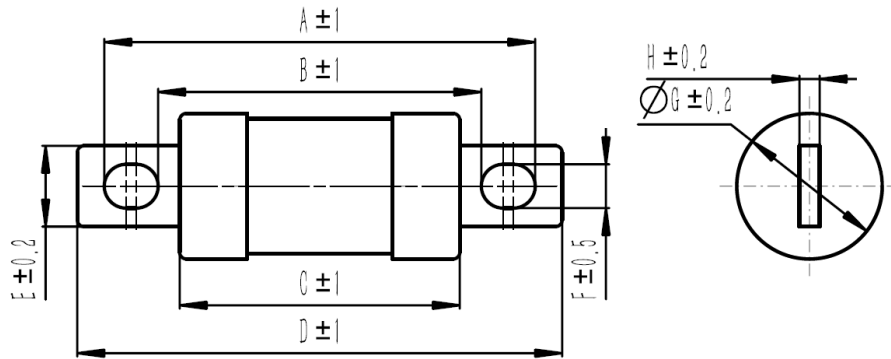
**Applications:**

- Low Speed Electric Vehicle
- Pure Electric, Hybrid Vehicle
- Battery Module
- Ultra-capacitor

**Product Model**

	HC	EV	F	2	-	20JC	-	100	/	750
HC Company Code										
EV Electric Vehicle										
F FUSE										
Series Code	2: Ceramic Pipe									
Type	20JC; 30JC; 38JC									
Rated Current	100:100A; 125:125A; 150:150A; 200:200A; 225:225A; 250:250A; 300:300A; 350:350A; 400:400A; 450:450A; 500:500A									
Rated Voltage	250:250VDC; 500:500VDC; 750:750VDC; 1000:1000VDC									

**OUTLINE DIMENSIONS**



Model	Rated Voltage (V)	Rated Current (A)	A (mm)	B(mm)	C(mm)	D(mm)	E(mm)	F(mm)	G(mm)	H(mm)
HCEVF2-20JC-□/□	750	100	91	75	69	99	12	6.5	22	3
		125								
		150								
		200								
		225								
HCEVF-2-30JC-□/□	250	200	69	45	32	75	20	9	32	3
		250								
		300								
		350								
		400								
	500	225	86	62	49	92	20	9	32	3
		250								
		300								
		350								
		400								
	750	200	104	78	69	112	20	9	32	3
		225								
		250								
		300								
	1000	100	109	83	74	117	20	9	32	3
125										
150										
200										
HCEVF2-38JC-□/□	750	200	114	82	69	123	24	11	40	3
		300								
		350								
		400								
		450								
		500								